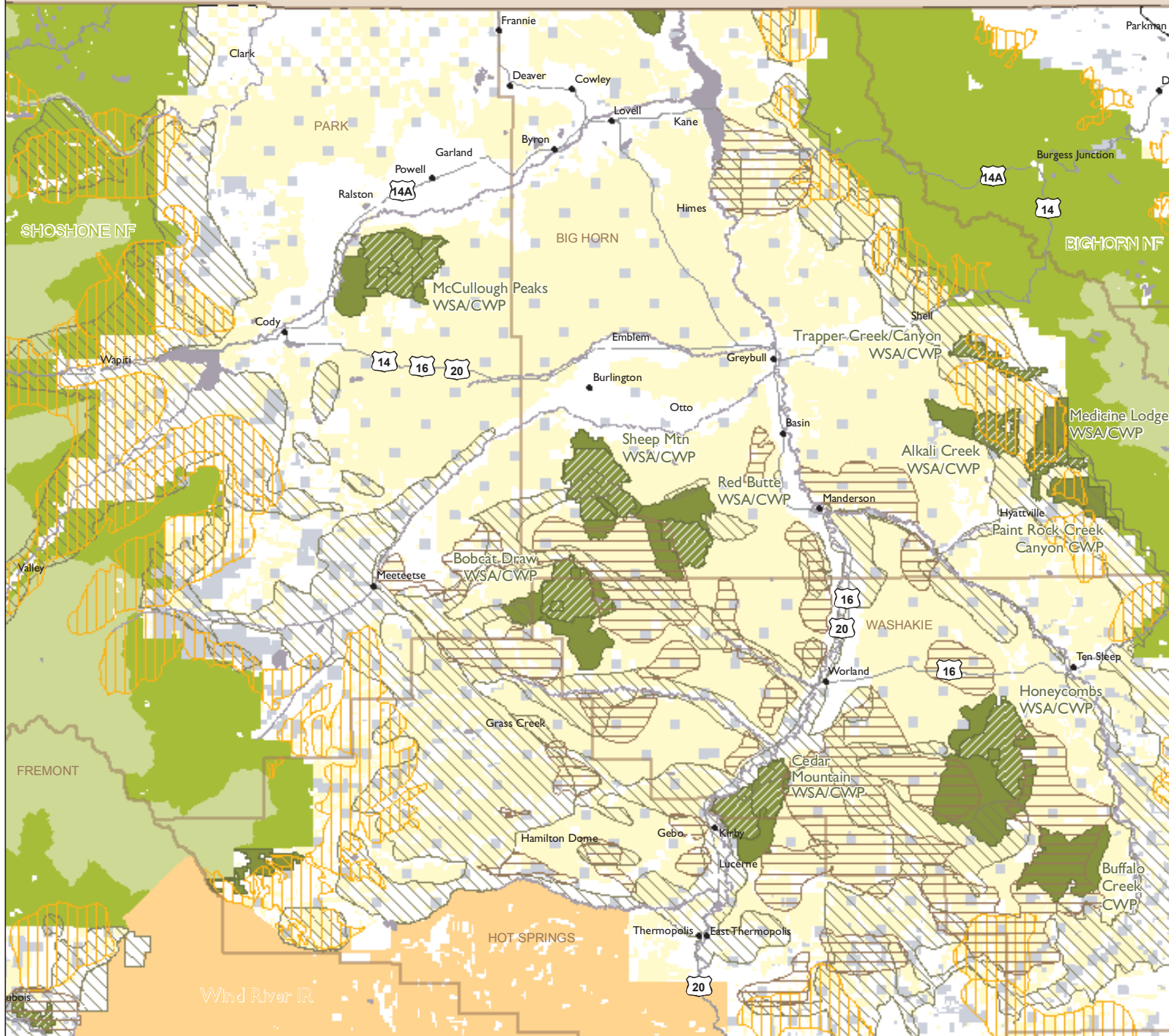


MONTANA

Bighorn Basin

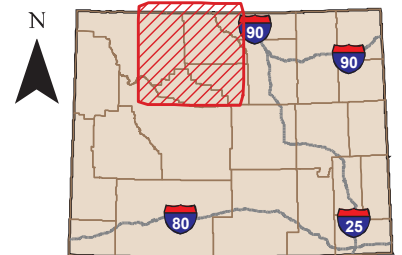


- Wilderness quality and wildlife habitat areas**
- Designated Wilderness Area*
 - BLM Wilderness Study Area
 - Citizens' Wilderness Proposal Area

- Wildlife Crucial Ranges**
- Antelope Crucial Range
 - Elk Crucial Range
 - Mule Deer Crucial Range

- Land Ownership & Administration**
- Bureau of Land Management
 - Indian Reservation
 - USFS National Forest
 - Wyoming State Land

* Designated Wilderness overlaps National Forest land.



NAD 1983 UTM Zone 13N
 Data Sources: BCA, BLM, LSI, SDVC, USFS, WGFD
 Sara Watterson, April 21, 2008

